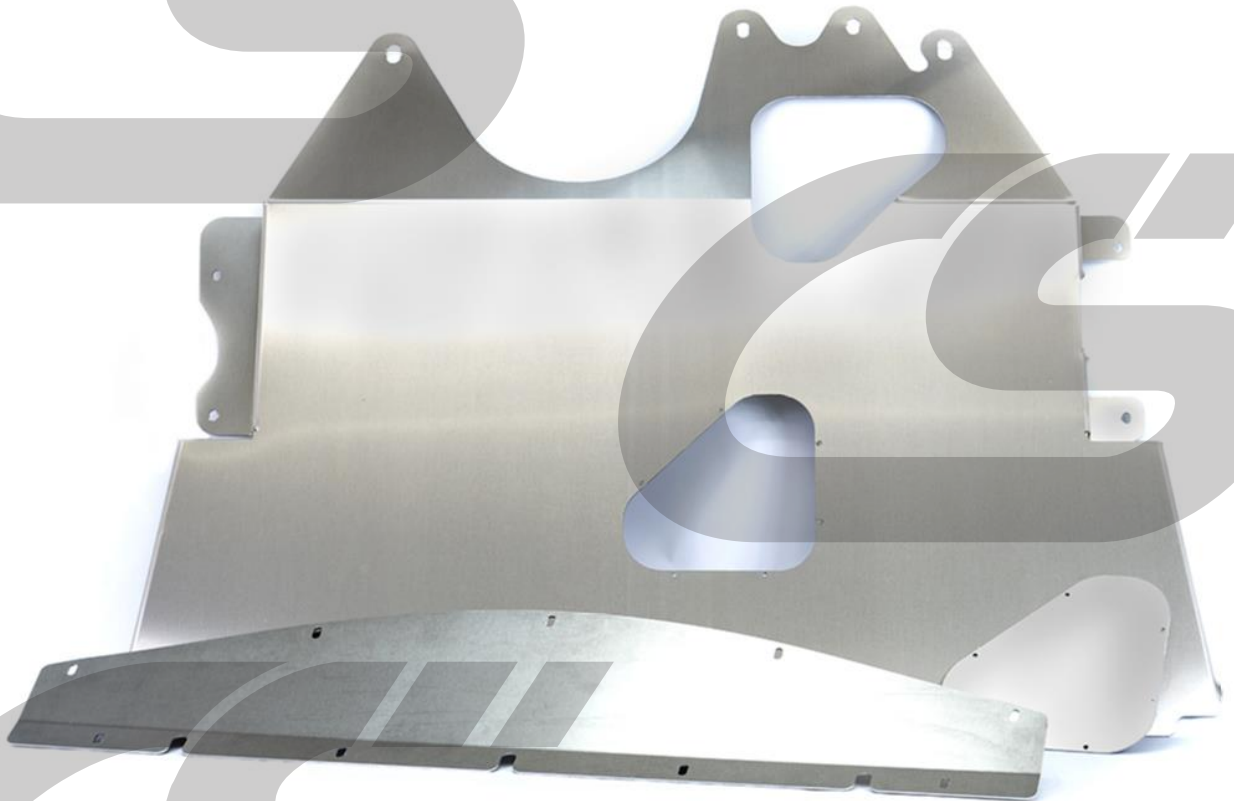


INSTALLATION INSTRUCTIONS



CORKSPORT **Aluminum Skid Plate**

2007-2009 Mazdaspeed 3, 2004-2009 Mazda 3

PART #: AXE-8-100-11

Need Help With Your Installation? Call (360)260-CORK



*We absolutely, positively,
deliver - every time.*

CORKSPORT.COM



CORKSPORT **Aluminum Skid Plate**

2007-2009 Mazdaspeed 3, 2004-2009 Mazda 3

PRODUCT DESCRIPTION:

Gain extra protection from rocks, road debris, and those pesky speed bumps with the CorkSport Aluminum Skid Plate for GEN 1 Mazdaspeed 3 and Mazda 3. The OEM plastic splash shields do little in the way of actual protection and are prone to breakage from the smallest hit. Gain peace of mind in your lowered Mazda without losing any ground clearance or cooling capacity.

Please let us know your feedback by submitting a review at:
<https://corksport.com/2007-2013-mazdaspeed-3-and-mazda-3-skidplate.html>

PRE-INSTALLATION NOTES:



These instructions were written for reference only and the use of a factory service manual is recommended.



How our instructions work: To best cover all of our customers experience levels, we have included a table of contents/order of operations along with step-by-step instructions.



These instructions were written using a 2008 Mazda 3 2.0L. Other Mazda 3 and Mazdaspeed 3 will be similar.



The edges of the aluminum skid plate can be sharp. Wear mechanics gloves when handling to prevent injury.

MATERIALS & TIME:

GENERAL INFO:



Time Est:
1hr



Difficulty:
2/5



CEL:
No



Warranty:
2-Year

TOOLING LIST:

- 19mm Socket
- 17mm Socket
- 10mm Socket
- 8mm Socket
- 4mm Allen Wrench or Socket
- 1/4" or 3/8" drive Ratchet
- Flathead Screwdriver or Push Clip Removal Tool
- Mechanics Gloves
- T20 Torx Socket/Bit

PARTS LIST:

- One (1) CorkSport GEN1 Skid Plate Rear Section
- One (1) CorkSport Oil Access Cover (installed on rear section)
- One (1) CorkSport GEN1 Skid Plate Front Section
- Three (3) 1" Nylon Spacers
- Three (3) M6x1.0x40mm Button Head Bolts
- Four (4) Extruded U-nuts
- Four (4) M6x1.0x16mm Button Head Bolts
- Four (4) M6 Washers
- Two (2) M10 Washers
- Two (2) M12 Washers
- Two (2) M10x1.25x20mm Bolt
- Two (2) M12x1.25x20mm Bolt

ORDER OF OPERATIONS & TABLE OF CONTENTS:

-  **OEM SPLASH SHIELD REMOVAL**
Section 1: OEM Splash Shield Removal Pg. 4-5

-  **CORKSPORT SKID PLATE INSTALLATION**
Section 2: CorkSport Skid Plate Rear Section Installation Pg. 6-8
Section 3: CorkSport Skid Plate Front Section Installation Pg. 9-10

-  **CHANGING YOUR OIL WITH THE CORKSPORT SKID PLATE**
Section 4: Changing Your Oil with the CorkSport Skid Plate Pg. 10-11

DETAILED INSTRUCTIONS:

1. OEM Splash Shield Removal

- a) Use a floor jack and jack stands to gain access to the underside of the vehicle. Only the front needs to be accessed for this install.



Always refer to the floor jack and jack stand manufacturer's instructions as well as the owners manual for your vehicle to determine proper jacking and support points. Alternatively, you can use an automotive lift to gain access to the underside of the vehicle.

- b) Locate the rear section of the OEM splash shield. Shown with red square in **Figure 1a**.
- c) Remove two (2) push clips from the OEM splash shield using a flat head screwdriver or push clip removal tool.. Shown circled in blue in **Figure 1a**.
- d) Remove seven (7) 10mm bolts from the OEM splash shield using a 10mm socket and ratchet. Shown circled in green in **Figure 1a**.

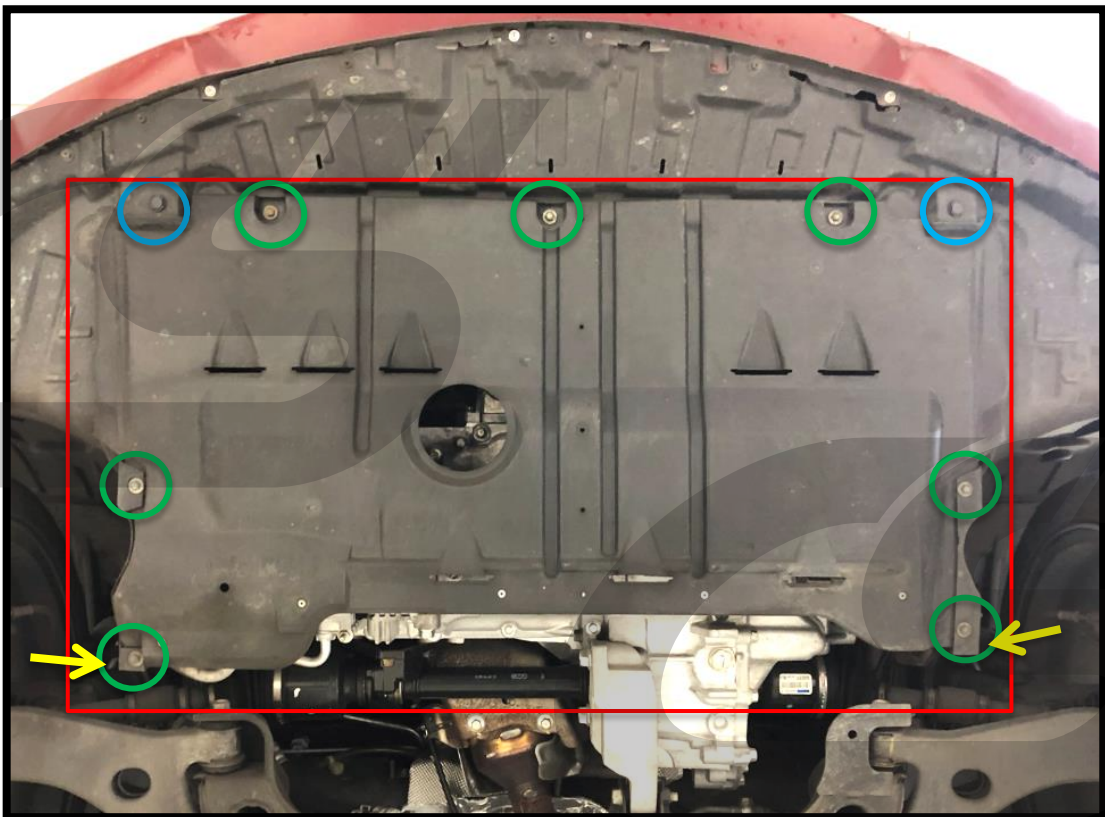


Figure 1a

DETAILED INSTRUCTIONS:

1. OEM Splash Shield Removal (continued)

- e) Locate the small plastic tab in the corner of each side of the rear OEM splash shield section. See the **yellow circle** in **Figure 1b** and the **yellow arrows** in Figure 1a.
- f) Carefully pull the OEM splash shield to free it from the small plastic tab on each side.
- g) Remove the OEM splash shield rear section from the vehicle.
- h) Remove one (1) push clip from the front section of the OEM splash shield using a flathead screwdriver or push clip removal tool. Shown **circled in red** in **Figure 1c**.
- i) Remove five (5) 8mm bolts from the front section of the OEM splash shield using an 8mm socket & ratchet. Shown **circled in blue** in **Figure 1c**.
- j) Remove the front section of the OEM splash shield from the vehicle.

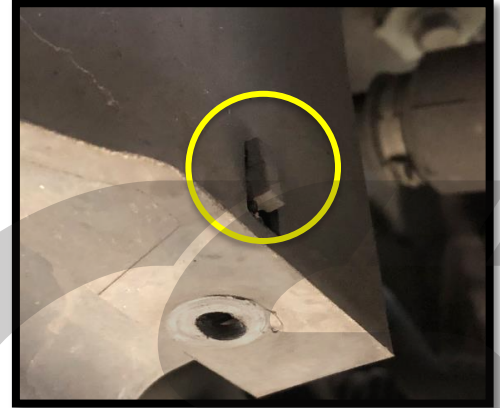


Figure 1b

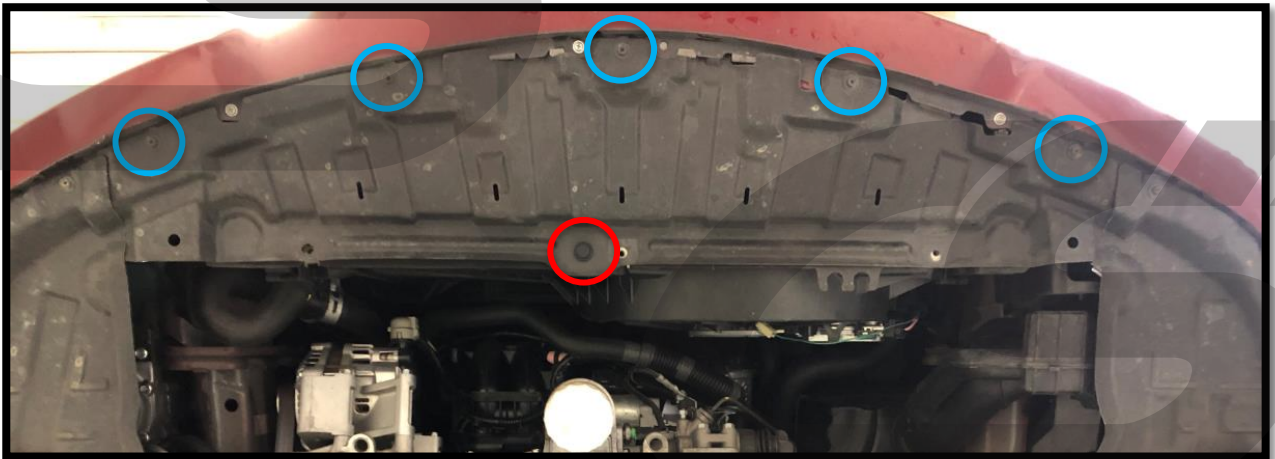


Figure 1c

DETAILED INSTRUCTIONS:

2. CorkSport Skid Plate Rear Section Installation

- a) Locate the four (4) OEM U-nuts attached to the outer sides of the OEM splash shield rear section. Shown circled in red in Figure 2a.
- b) Transfer the OEM U-nuts to the OEM plastic side splash shields. Figure 2b shows to correct locations. Figure 2c shows the OEM U-nuts installed.



The underside of your car should now look like Figure 2d.

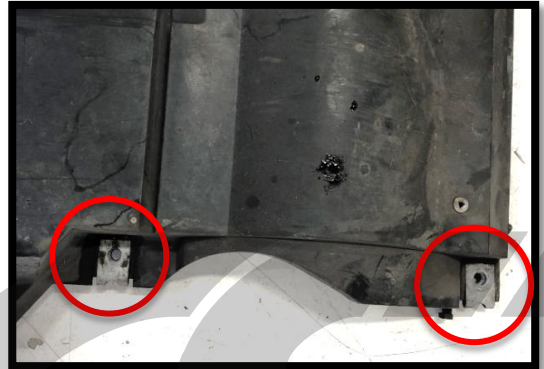


Figure 2a

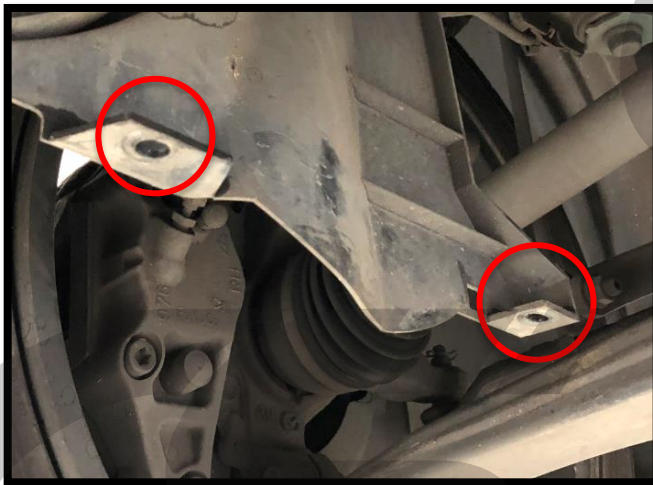


Figure 2b

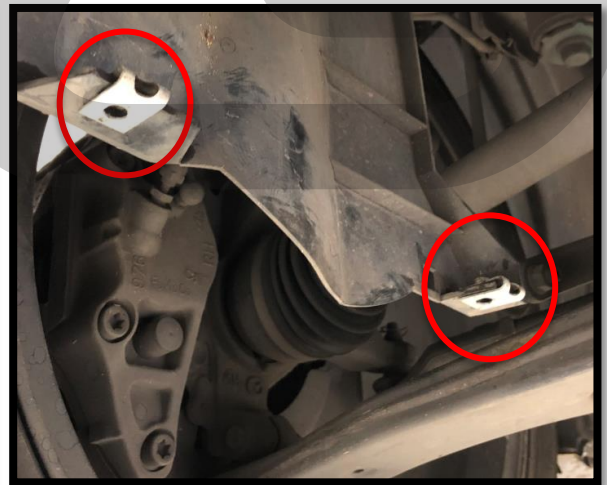


Figure 2c

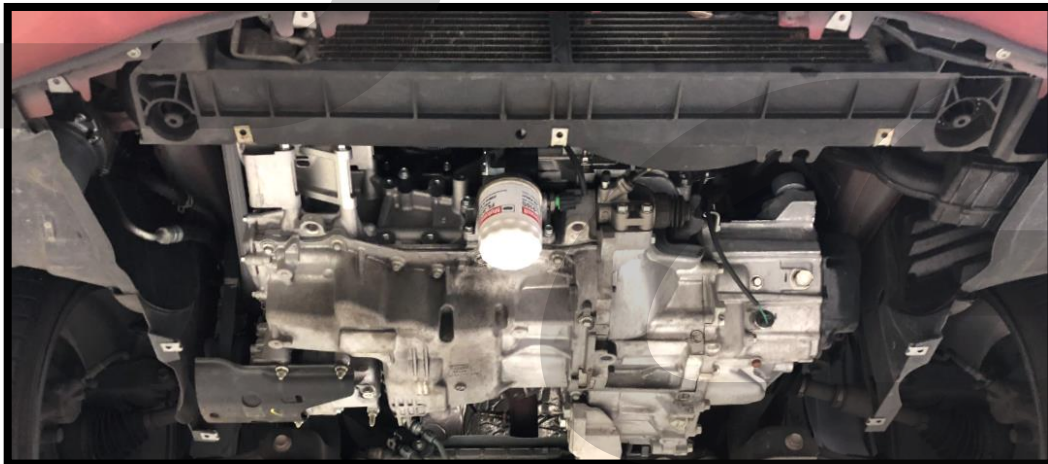


Figure 2d

DETAILED INSTRUCTIONS:

2. CorkSport Skid Plate Rear Section Installation (continued)

 Ensure your mechanics gloves are on for the following steps.

- c) Lift the rear section of the CorkSport Skid Plate into place and loosely secure with four (4) 10mm OEM bolts. Use the four outer bolt locations prepared in steps 2a and 2b. Skid plate shown loosely in place in **Figure 2e**.



Figure 2e

- d) Place the three supplied 1" nylon spacers on top of the skid tray, aligned with each of the slots circled in blue in **Figure 2e**.
- e) Align the three supplied M6x1.0x40mm button head bolts with the nylon spacers and the threaded holes in the radiator support.
- f) Loosely thread the three M6x1.0x40mm button head bolts into the threaded holes in the radiator support. **Figure 2f** shows what these mounting locations should look like when loosely assembled.



Figure 2f

DETAILED INSTRUCTIONS:

2. CorkSport Skid Plate Rear Section Installation (continued)

- g) Using the supplied M12 bolts and washers, loosely attach the rear of the CorkSport Skid Plate to the threaded holes in the chassis. These M12 bolts fit into the two outer slots shown with red circles in **Figure 2g**.
- h) Using the supplied M10 bolts and washers, loosely attach the rear of the CorkSport Skid Plate to the threaded holes in the chassis. These M10 bolts fit into the two inner slots shown with blue circles in **Figure 2g**.

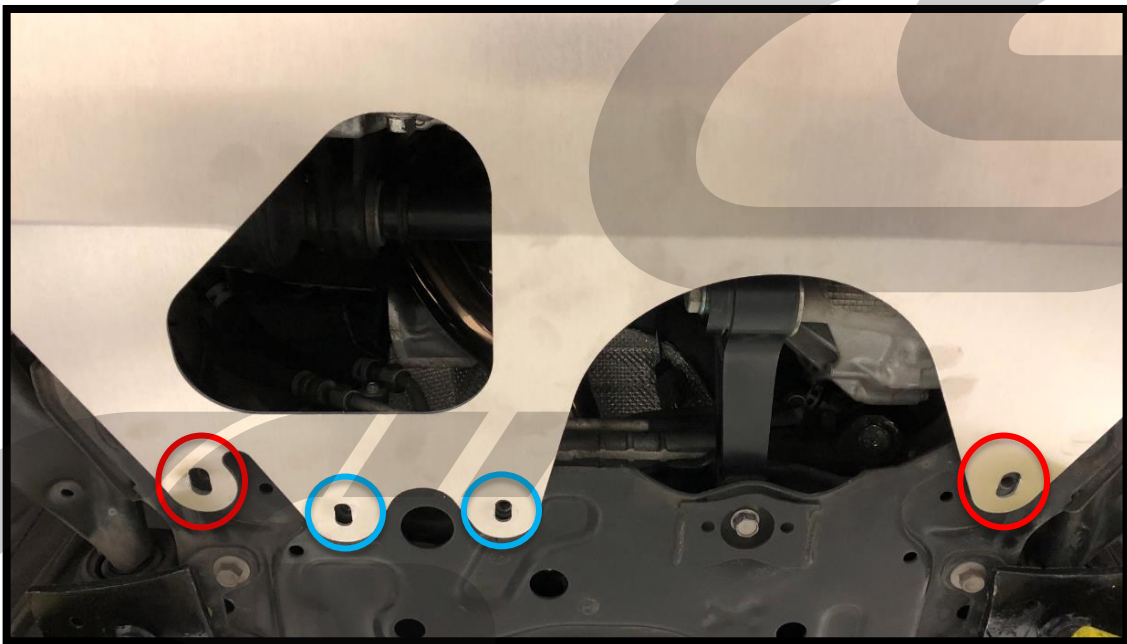


Figure 2g



You may need to shift the skid plate around to help line up the holes & get the bolts started for these 4 rear bolts.

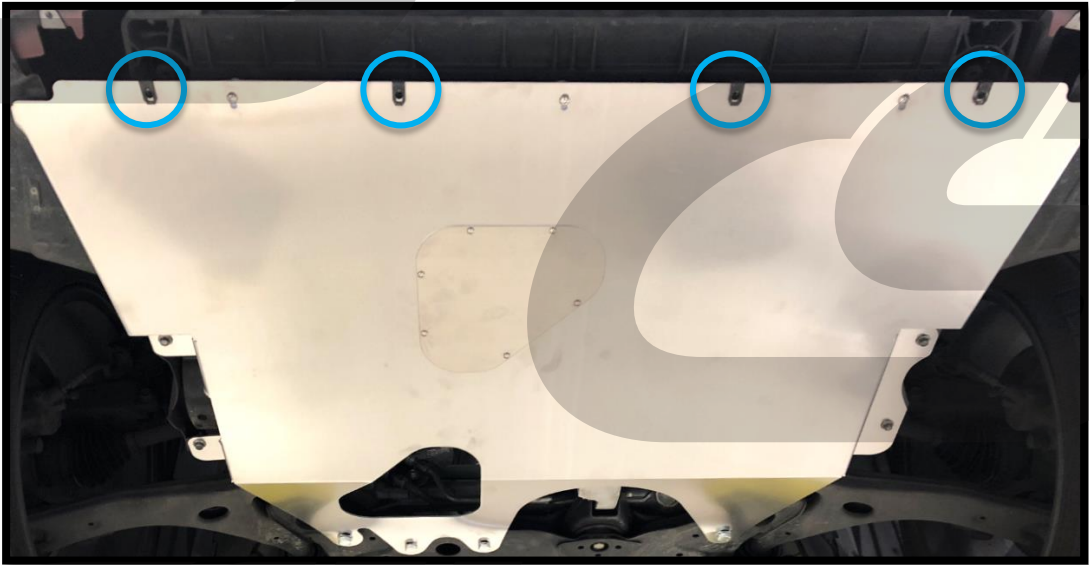
- i) **Double check alignment and ensure the CorkSport Skid Plate is sitting straight compared to the rest of the car.** The button head bolts should sit approximately in the middle of the slots from step 2d for good alignment on most cars.
- j) **Once aligned and fitment is good, tighten the bolts to the following specs:**
- M6 button head bolts: Tighten to **10-14ft-lbs.** with 4mm Allen wrench or socket
 - OEM 10mm Bolts: Tighten to **10-14ft lbs.** with a 10mm socket and ratchet
 - M12 & M10 bolts: Tighten to **20-25ft lbs.** with a 17mm socket and ratchet for M10 and 19mm socket for M12.



The rear of the skid plate will flex as the M10 and M12 bolts are tightened. This is normal.

DETAILED INSTRUCTIONS:**3. CorkSport Skid Plate Front Section Installation**

- a) Install the four (4) supplied U-nuts onto the rear section of the CorkSport Skid Plate. They align with the four holes in the rear section of the plate with the threaded side on top of the skid plate. Locations shown circled in blue in **Figure 3a**.

**Figure 3a**

- b) Lift the front section of the CorkSport Skid Plate into place and loosely secure it with the two (2) outermost 8mm bolts removed in Step 1i. These bolts are circled in red in **Figure 3b**.
- c) Loosely reinstall the remaining three (3) OEM 8mm bolts removed in Step 1j. These bolts are circled in blue in **Figure 3b**.

**Figure 3b**

DETAILED INSTRUCTIONS:

3. CorkSport Skid Plate Front Section Installation (continued)

- e) Connect the two sections of the CorkSport Skid Plate together by loosely installing the four (4) M6x1.0x16mm button head bolts with M6 washers into the U-nuts installed in step 3b. These bolts/washers are circled in red in **Figure 3c**.
- f) Check alignment of the CS skid plate front section compared to your bumper and OEM plastic shielding. The button head bolts being near the center of the slots provides the best alignment on most cars.
- g) Once you are happy with fitment, tighten the bolts to the following:
 - M6 button head bolts: **10-14ft-lbs.** using a 4mm Allen wrench or socket
 - OEM 8mm bolts: **Until snug** (usually **8-10ft-lbs.**) using an 8mm socket and ratchet

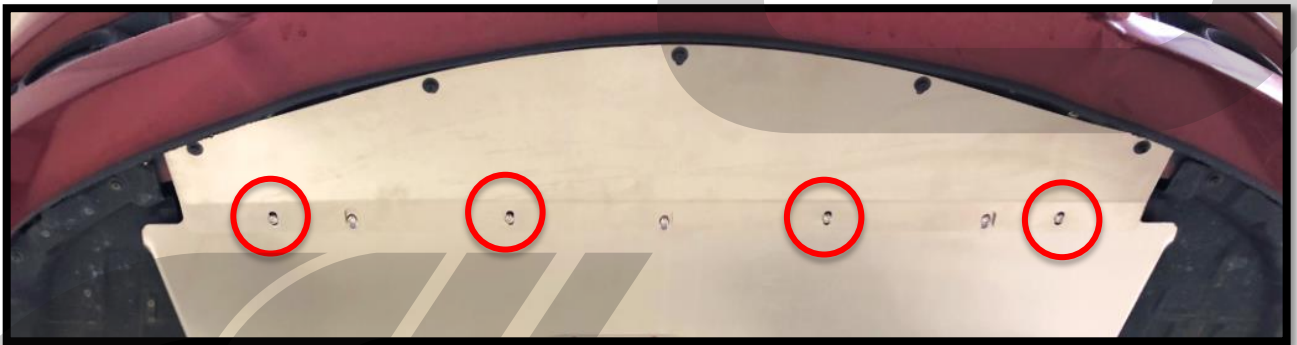


Figure 3c

4. Changing your Oil with the CorkSport Skid Plate

- a) The oil drain plug can be easily accessed through the large cutout in the rear of the skid plate.
- b) To reach the oil filter, the oil filter access cover must be moved out of the way.
- c) Remove five (5) of the six T20 Torx screws. They are shown circled in red in **Figure 4a** on the next page.

DETAILED INSTRUCTIONS:

4. Changing your Oil with the CorkSport Skid Plate

- d) Loosen but do not remove the sixth T20 Torx screw.
- e) Rotate the oil filter access cover out of the way. Shown in **Figure 4b**.
- f) When finished servicing, reinstall all screws and tighten until snug.



Do not overtighten the oil access screws as they can strip if excessive force is applied.

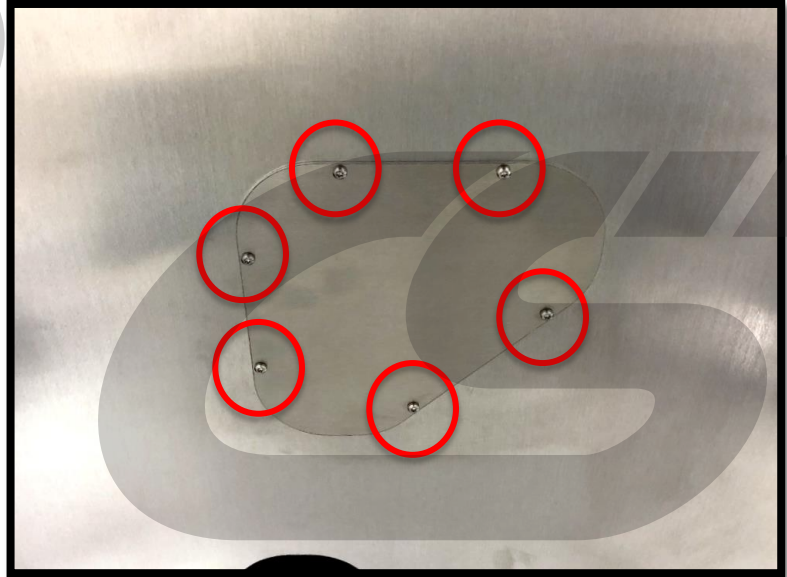


Figure 4a

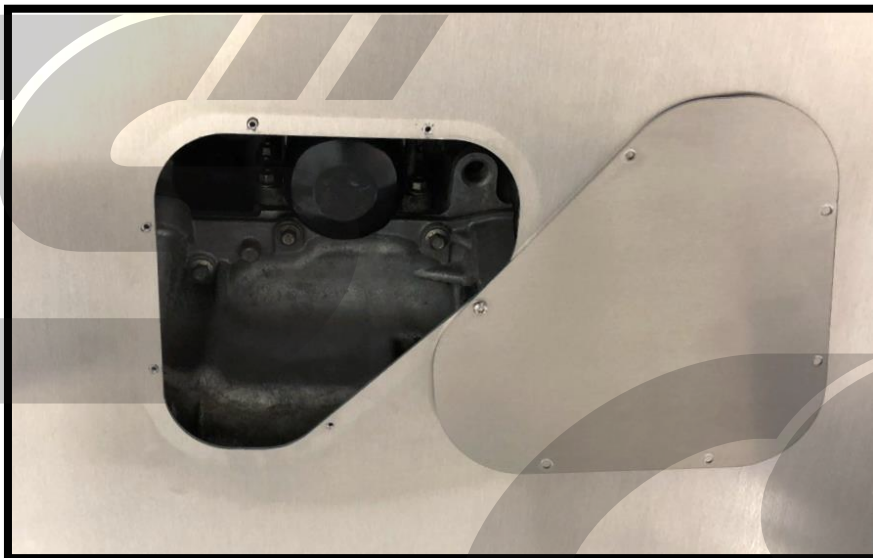


Figure 4b



This completes the installation of your CorkSport Aluminum Skid Plate. Enjoy the increased engine protection and great look!

WHAT'S NEXT?

CorkSport Performance Steering Wheel

Take control with the CorkSport Performance Steering Wheel for 2007-2009 Mazdaspeed 3 and 2004-2009 Mazda 3. Add customized style to your interior and some confidence to your driving with our leather steering wheel. Hand wrapped and stitched around a racing-inspired grip design, the genuine leather is plush and comfortable for daily driving and canyon carving. Designed to be an OEM direct replacement, the CorkSport Performance Steering wheel is a simple 30 minute installation.

Also available in all black!

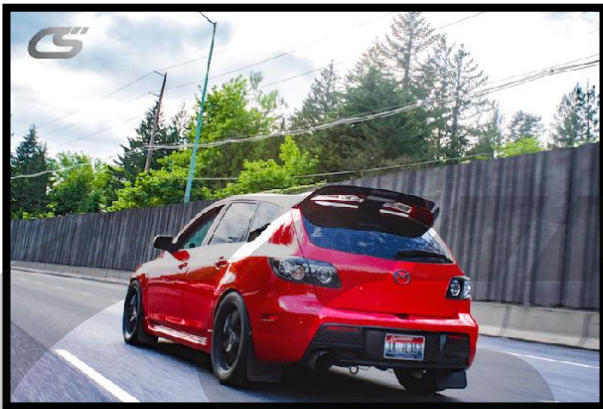


CorkSport Performance Lowering Springs

Give your car the performance appearance and edge you have been looking for with the CorkSport Lowering Springs.

By reducing ride height approximately 1.2" in the front and 1.0" in the rear adding the CorkSport Lowering Springs to your Mazdaspeed 3 will result in a quicker turning response crisper road feel a more aggressive appearance and a firmer spring rate while maintaining excellent ride quality.

Also available for Mazda 3!



CorkSport Short Ram Intake

One of the easiest and most beneficial performance enhancements you can do for your vehicle, the CorkSport Power Series Short Ram Intake replaces your factory airbox with an open intake system allowing more air into the intake chamber. The CorkSport Mazdaspeed 3 Short Ram Intake includes our precision machined MAF housing made from one piece of billet aluminum with included air straightener, durable dry flow air filter and custom reinforced silicone connector.

Also available for Mazda 3!

