

## CorkSport Mazda 6 Power Series Exhaust

2014+ Mazda 6 Sedan



Thank you for purchasing the CorkSport Exhaust for the **2014+ Mazda 6**. Constructed from fully polished T-304 stainless steel, the CorkSport exhaust combines a deep exhaust note with quality construction while adding the performance and appearance that truly befit the great looks of the Mazda 6. Please let us know what you think by submitting a review at:

<https://corksport.com/corksport-2014-mazda-6-performance-exhaust.html>

### Pre-Installation Notes:



**Make sure your vehicle is completely cooled down** prior to starting installation. If you are going to work on your car within an hour or two of having driven it, use a fan to cool off the car.



**These instructions were written for reference only** and the use of a factory service manual is recommended. Please read these instructions thoroughly prior to starting installation.



**These installation instructions were written using a 2014 Mazda 6 sedan.** Installation for 2014+ Mazda 6 will be similar.

### Materials and Time:



#### General Info.

Part #: ATI-6-100  
Time Est: 1-2 hour  
Wrench Rating: 2/5



#### Tooling List

10mm Socket  
12mm Socket  
14mm Socket  
17mm Socket  
14mm End Wrench  
17mm End Wrench  
3/8" Drive Ratchet  
6" Extension



#### Parts List

Refer to front page for included hardware

Large Flat Head  
Screwdriver  
WD-40  
Jack Stands  
Floor Jack  
Torque Wrench  
Thread Anti-Seize

Need Help With Your Installation?

Call (360) 260-CORK



## Order of Operations & Table of Contents

Follow the order of operations listed below for your purchased exhaust system.



### **CorkSport Axle-Back Only Use:**

Section 1: Support the car on floor Jack/Jackstands or Lift

Pg. 2

Section 2: Remove the OEM Muffler Assembly

Pg. 3

Section 5: Install the CorkSport Axle-Back Exhaust

Pg. 8-9



### **CorkSport Cat-Back & Axle-Back Use:**

Section 1: Support the car on floor Jack/Jackstands or Lift

Pg. 2

Section 2: Remove the OEM Muffler Assembly

Pg. 3

Section 3: Remove the OEM Mid-Pipe

Pg. 4-5

Section 4: Install the CorkSport Mid-Pipe Exhaust

Pg. 6-7

Section 5: Install the CorkSport Axle Back Exhaust

Pg. 8-9

## Detailed Instructions

### 1. Support the Car on Floor Jack/Jackstands or Lift

- a) Use a floor jack and jackstands to gain access to the underside of the vehicle. You will need to access both the mid-pipe exhaust section and axle-back exhaust section. Shown in **Figure 1a**.



Always refer to the floor jack and jackstand manufacturers instructions as well as the factory owners manual for your vehicle to determine jacking points and support points. Alternately, use an automotive lift to gain access to the underside of the vehicle. Redundant support mechanisms are recommended.

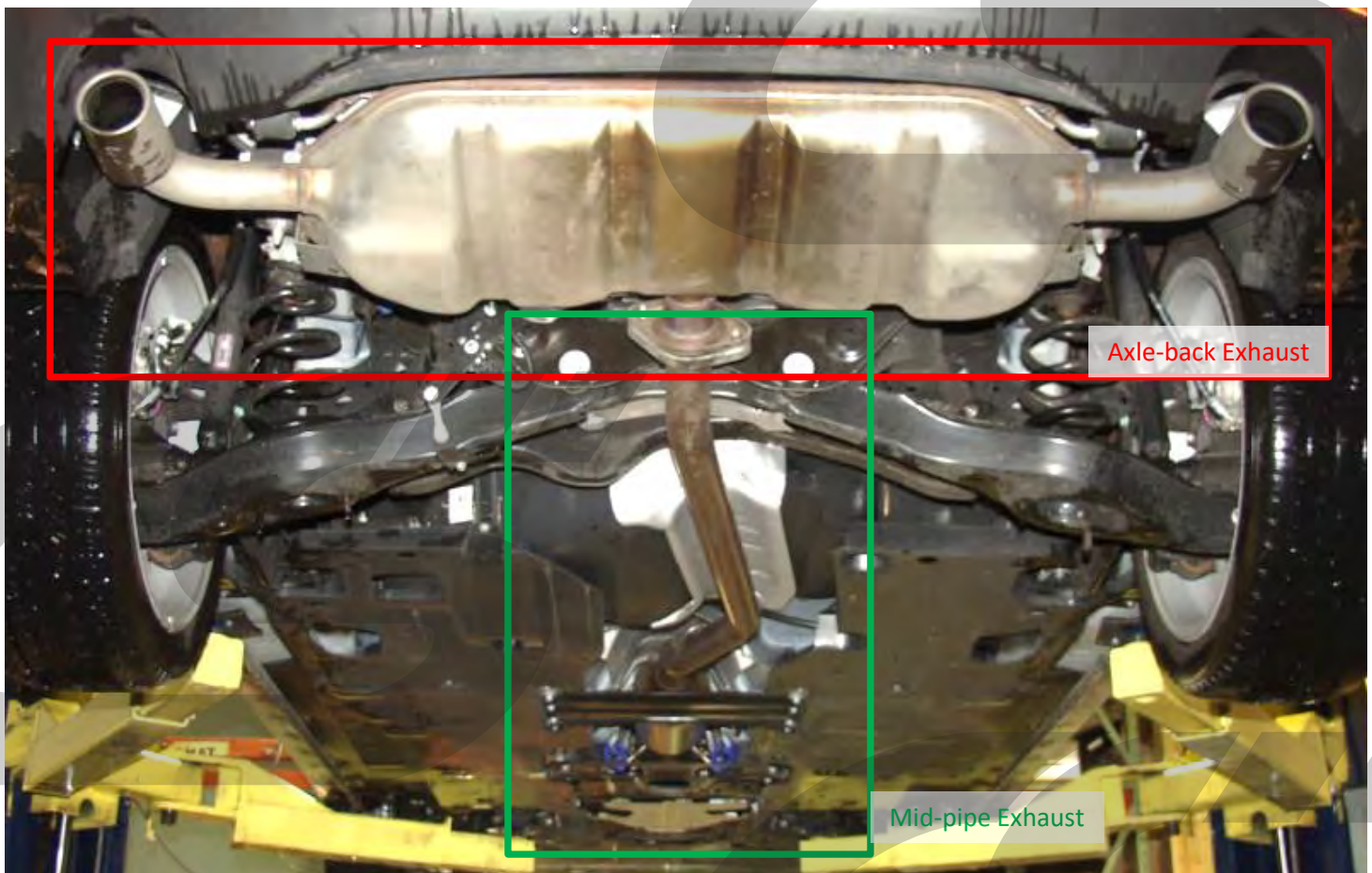


Figure 1a



The mid-pipe section for the sedan and hatch-back are the same part number, therefore interchangeable. The axle-back section for the sedan and hatch-back differ only by the exhaust tip design and orientation.



## 2. Remove the OEM Muffler Assembly

- a) **Jack up and support the vehicle using factory jacking and jack stand points.** Refer to the owners manual for correct positions of jack and jack stands.
  
- b) **Using a 14mm socket and end wrench, remove the two bolts and two nuts holding the factory exhaust to the cat pipe (bolts circled in [Figure 2a](#)).**

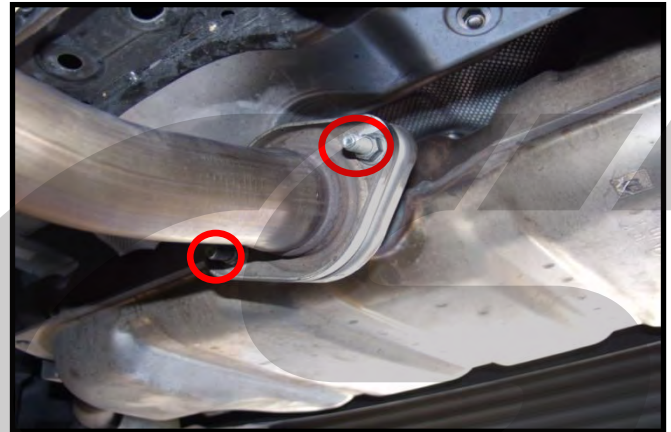


Figure 2a

- c) **Remove the exhaust from the four rubber exhaust hangers located on either side of the muffler (shown in [Figure 2b](#)).** Start with one side and remove the exhaust hanger from the rubber hanger. This can be made easier with WD40. The exhaust will be supported by the other hangers on the opposite side. While supporting the center of the muffler, remove the last two exhaust hangers from the rubber hangers.



Figure 2b



Support the muffler as you remove it from the car to keep it from falling to the ground. The easiest way is to get a friend to help you or use a floor jack.

## 3. Remove the OEM Mid-Pipe

- a) **Remove the cat heat shielding.** Pry out the four(4) plastic push clips with a flat blade screw driver (green arrows in Figure 3a).
- b) **Use a 10mm socket wrench to remove the nine (9) bolts** (green circles in Figure 3a).
- c) **Remove the cat skid protection plate.** Un bolt the six (6) 12mm bolts (red circles) with a socket wrench. Slide the plate to one side to free it from the under body aero panels (Figure 3a).
- d) **Remove the mid body chassis brace** by using a 12mm socket to remove the six (6) bolts (blue circles in Figure 3a).



Support the exhaust pipe as you remove the mid chassis brace from the car to keep the exhaust from falling to the ground. The easiest way is to get a helper or use a jack.

- e) **Remove the O2 sensor wire bracket** using a 10mm socket to remove the bolt (red circle in Figure 3b). Then disconnect the O2 sensor wire.



Figure 3b

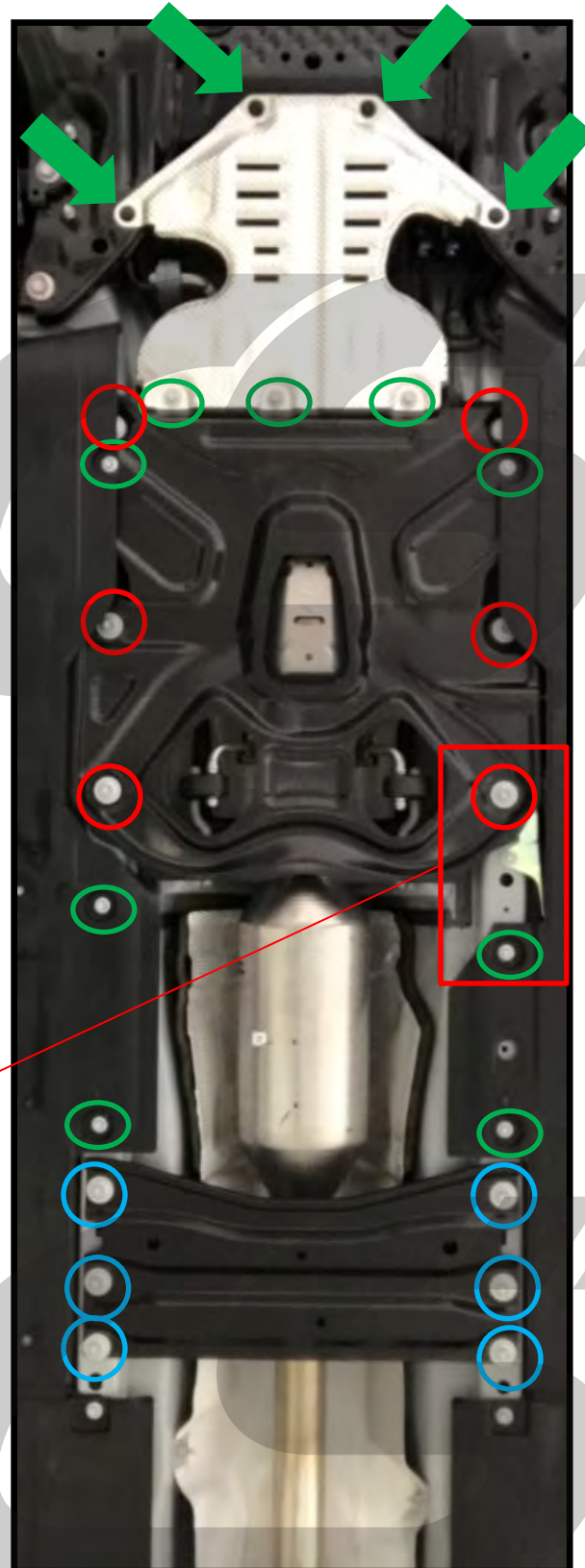


Figure 3a

## 3. Remove the OEM Mid-Pipe (continued)

- f) **Un-fasten the cat from the downpipe by removing the two (2) 14mm nuts (red circles) with a 14mm deep socket wrench (Figure 3c).**
- g) **Lubricate the two (2) rubber hangers with WD-40 and pull the exhaust free from the vehicle (Red arrows in Figure 3d).**
- e) **Remove the o2 sensor harness from the metal clips fastened to the cat. Use a flat blade screw driver to pry open the clip and pull the harness free (Figure 3e).**
- f) **Remove the o2 sensor (red arrow) by turning it counter-clockwise with a 22mm o2 sensor wrench. Let the sensor hang down from the wiring (Figure 3c).**

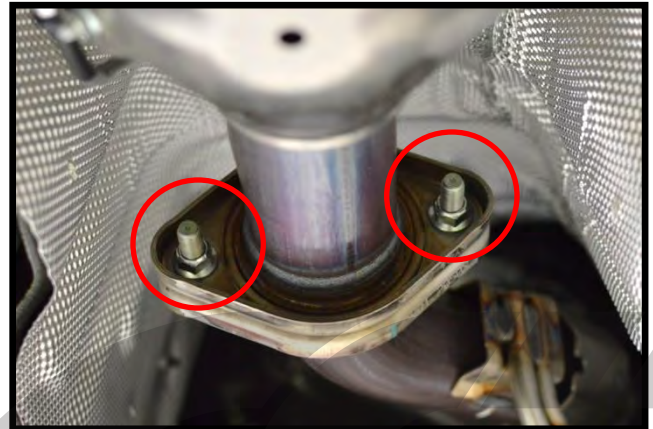


Figure 3c

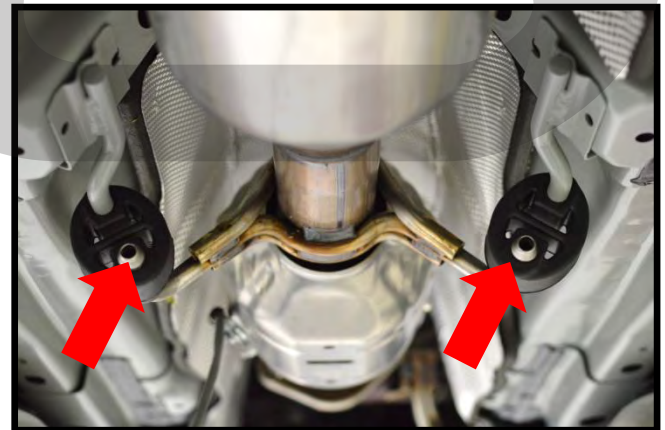


Figure 3d



Apply WD-40 to the threads of the o2 sensor then tighten and untighten if it does not remove easily.

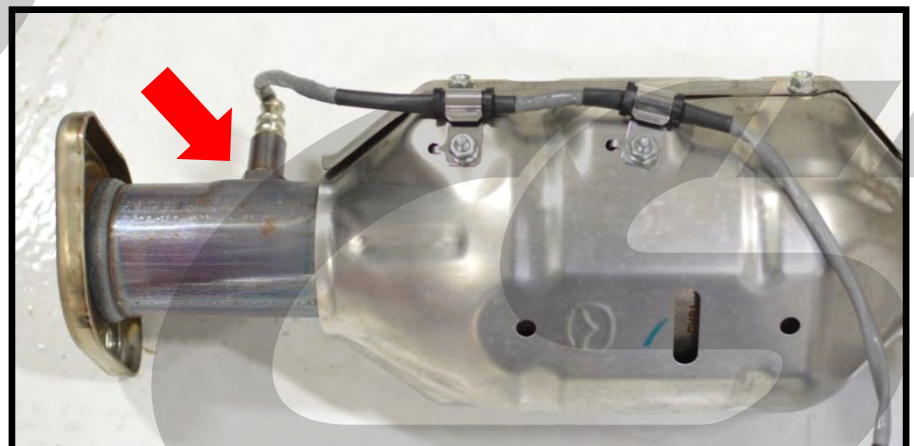


Figure 3e



## 4. Install the CorkSport Mid-Pipe Exhaust

a) Coat the threads on the O2 sensor with anti-seize and fasten it back into the O2 bung in the exhaust with an O2 sensor wrench (green arrow in Figure 4a).

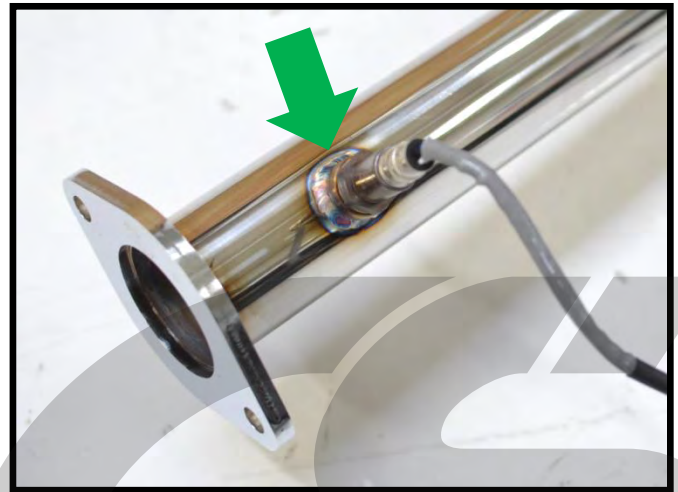


Figure 4a

b) Place the forward section of the CorkSport exhaust pipe into the rubber hangers (blue arrows in Figure 4b). Verify that the o2 sensor bung is placed upward and toward the front of the vehicle.

b) Replace the mid chassis brace and fasten it in place with the six (6) 12mm bolts (red circles in Figure 4b). Torque to 15-17ft-lbs.

c) Verify the factory exhaust gasket is still attached to the downpipe and guide the downpipe studs into the flange holes of the CorkSport exhaust pipe (Figure 4c).

e) Coat the downpipe studs with anti-seize lubricant. Replace the two (2) 14mm nuts (red circles) and fasten the exhaust flanges together (Figure 4c). Torque the nuts 35ft-lbs.

d) Push the downpipe and CorkSport exhaust pipe together. The protruding pipe going past the gasket on the downpipe will slip inside of the CorkSport exhaust flange.

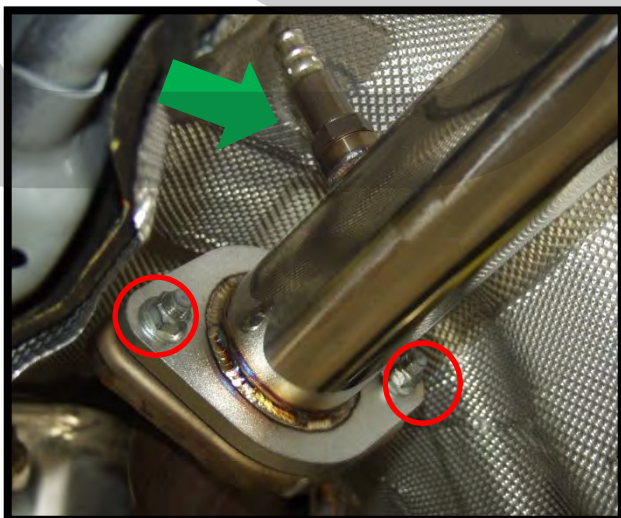


Figure 4c

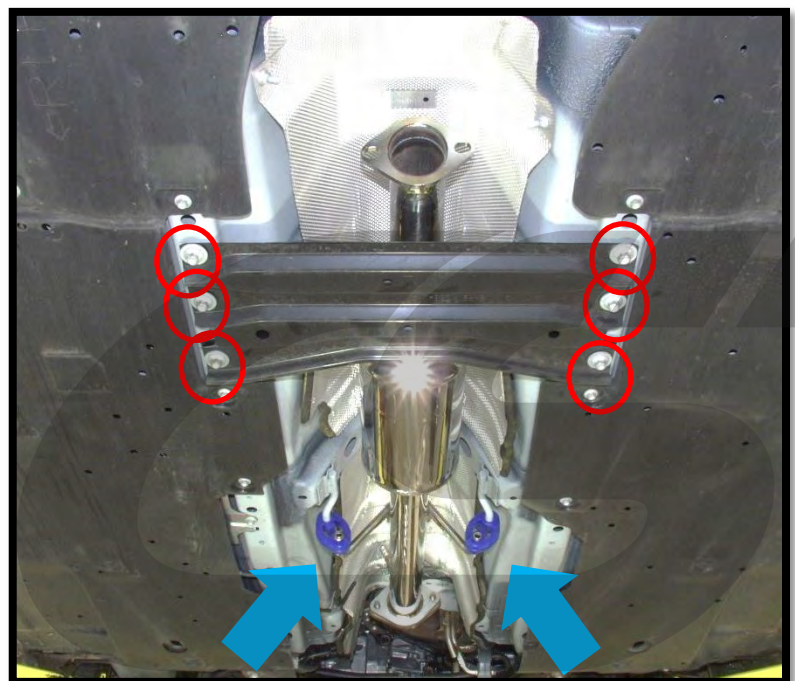


Figure 4b



**4. Install the CorkSport Mid-Pipe Exhaust (Continued)**

- f) Re-Connect the O2 sensor wire and install the sensor wire bracket removed in step 3e.
- g) Install the rearward mid-section pipe as shown in **Figure 4d**. Use the provided 60mm gasket and two assembled bolts with flat and split lock washers.

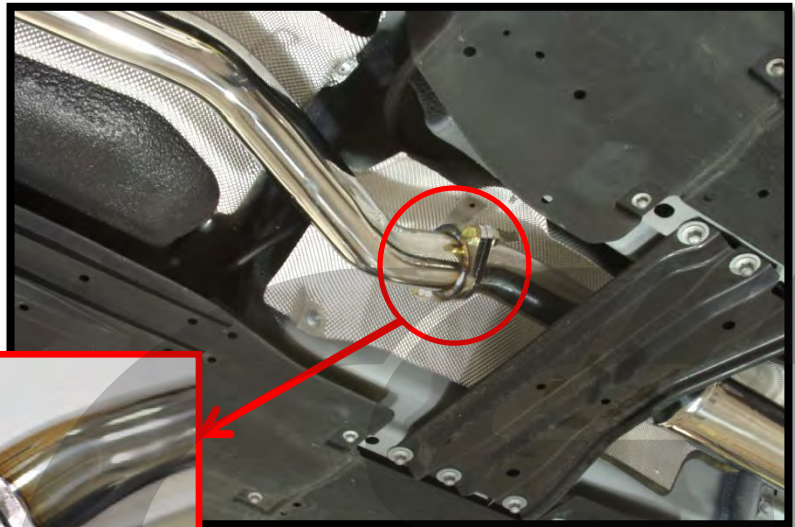


Figure 4d

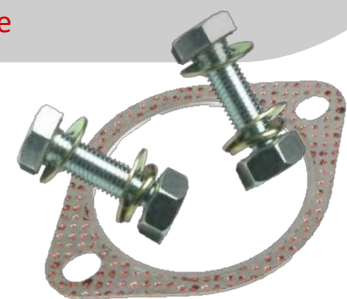


The CorkSport mid section pipe only has one flange with the pipe protruding for gasket placement. This end of the pipe will be installed toward the rear of the vehicle.



Figure 4e

- h) Align the flanges as shown in **Figure 4e**. Use a 17mm socket and wrench to torque the bolts to 45 ft-lbs.



60mm Exhaust Gasket

- i) Install the OEM gasket used between the mid-section pipe and axle back exhaust as shown in **Figure 4e**.

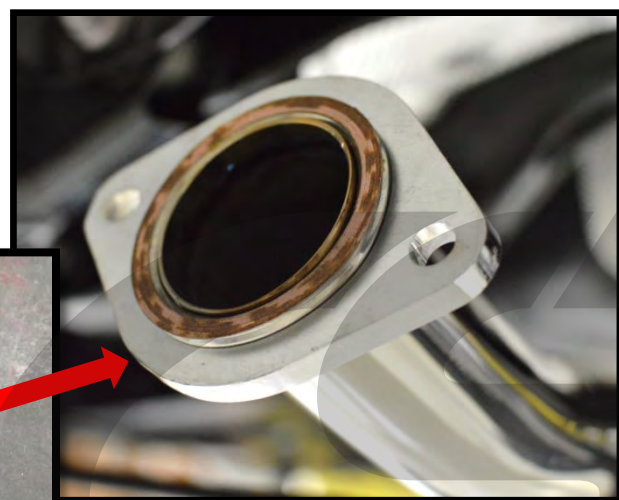


Figure 4e

## 5. Install the CorkSport Axle Back Exhaust.

- a) **Install the CorkSport axle back exhaust.** Place the two exhaust hangers into the two (2) rear stock rubber exhaust hangers and allow it to hang for now (red arrows in Figure 5a).



Figure 5a



- b) **Loosely bolt the extension pipe between the axle back and the factory exhaust using the provided hardware and gasket.** The curved part faces downward and toward the mid-section exhaust (red arrow in Figure 5b).



Figure 5b



Install the provided hardware in the order: 17mm bolt, washer, exhaust flanges, second washer, lock washer, then finally the 17mm nut. **Figure 5d.**

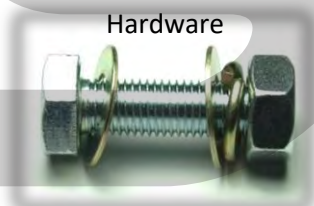


Figure 5d

- c) **Align the exhaust tips and hangers so the exhaust is straight and centered.** Figure 5c and Figure 5e show how the exhaust should look when properly aligned.



Figure 5c



## 5. Install the CorkSport Axle Back Exhaust (continued)

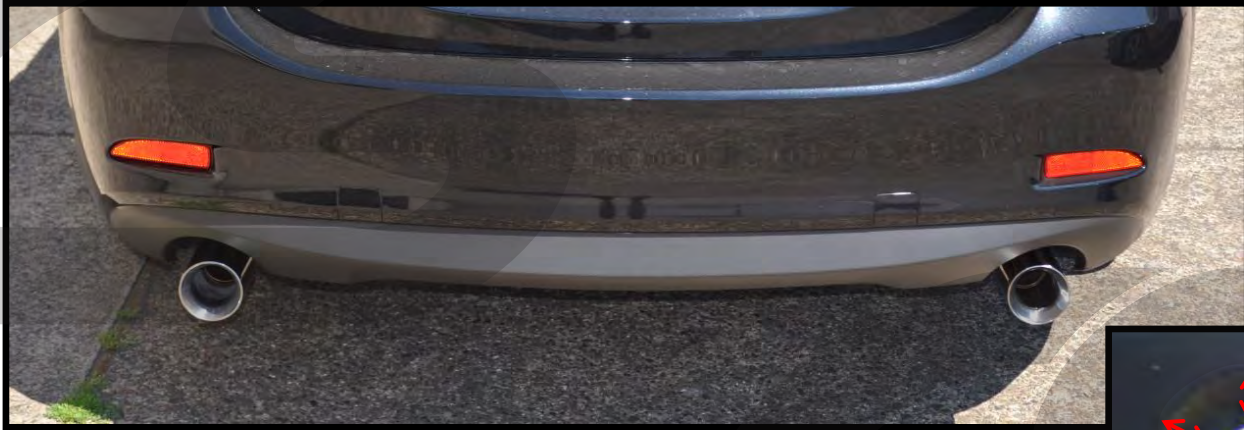


Figure 5e



Misalignment of the axle back muffler section could result in melting the bumper cover. Ensure there is at least a 1/2" gap between the exhaust tip and bumper cover. Gap is shown with red arrows in Figure 5e.

- d) **Tighten the hardware between the axle-back section and the extension** with a 17mm socket wrench to 45ft-lbs.
- e) **Tighten the hardware between the extension and the mid-section** with a 17mm socket wrench to 35ft-lbs.
- f) **Re-install the cat skid protection plate.** Install and torque the 12mm bolts to **15-17 ft-lbs.**
- g) **Re-install the cat heat shielding.** Install and torque the 10mm bolts **12-14 ft-lbs.**
- h) **Re-install the 10mm bolts that hold the undercarriage aero panels.** Torque to **8-10 ft-lbs.**



This completes the installation of your CorkSport Exhaust. Bring the car down off the jack stands and start the car. Check under the car and listen for leaks (usually a whispering tick sound at the flange). If there are leaks, double check that all fasteners are tight and gaskets are properly aligned. There may be a burning off smell as the exhaust is heated for the first time. This smell will go away after some driving.



Part # ATI-6-100

**CorkSport**  
MAZDA PERFORMANCE

## What's Next:

### CorkSport Adjustable Swaybar

Remove the tendency to overpower the front tires under hard cornering and minimize traction robbing body lean with the CorkSport Mazda 3 Rear Adjustable Sway Bar. Compressing inside suspension, the CorkSport Mazda 3 Rear Sway Bar effectively increases the spring rate on side of the suspension which is compressed most and its adjustability allows you to fine tune the handling.



### CorkSport Crankshaft Pulley

Add style and performance to your Skyactiv-powered Mazda with the CorkSport lightweight, crankshaft pulley. The thoughtful design improves the throttle response and power of your Mazda, while adding a little more detail to your engine bay. Our replacement pulley fits the 2.0 and 2.5 Skyactiv-G gas engine.



### CorkSport Rear Engine Mount

Improve your driving experience with CorkSport's Mazda 3 Rear Motor Mount (RMM). Reducing your engine's movement enhances the power transfer from engine to tire, therefore improving throttle response, gear shifting, and driver feedback.

