

CorkSport

MAZDA PERFORMANCE
www.CorkSport.com

CorkSport Polyurethane Mud Flaps for the 2004 - 09 Mazda 3 & 07 - 09 MazdaSpeed 3



WARNING: When removing your wheels and tires, always follow the proper torque specs when reinstalling your lug nuts to ensure that your wheels are fully secured.



WARNING: Thoroughly read the precautions and instructions that come with your Floor Jack and Jackstands as well as your vehicle's owners manual for appropriate jacking methods and jacking / support points. Always double up support on a vehicle - Jack Stands and Floor Jack /etc.



NOTE: When under the car, you should be wearing mechanics gloves or other form of hand protection as well as ANSI Approved Safety Glasses.



NOTE: These instructions were written for reference only and the use of a factory service manual is recommended. Please read these instructions thoroughly prior to starting installation.

Part Number: Axe-8-900 Time Estimate: 45-60 min. Wrench Rating: 2/5	Model Mazda 3	Year 2004-09	Trim All
TOOLING LIST: Breaker Bar or Impact Gun Proper Removal Tool For Lug Nuts Phillips Screwdriver Small Flathead Screwdriver Jack Stands Floor Jack		0.25" Drill Bit Drill Level 2x 10mm Open Ended Wrenches	PARTS LIST: 4x CorkSport Polyurethane Mud Flaps (2x front & 2x Rear) 2x M6x1.0 20mm Flanged Hex Head Bolts 2x M6x1.0 Flanged Nuts 2x M6 Washers 12x Plastic Push Pins 2x Small Right Angle Brackets 2x Large Right Angle Brackets







For help with installation, call 360-260-CORK (2675)

Installation Instructions:

CorkSport Polyurethane Mud Flaps

2004-09 Mazda 3 & 2007-09 MazdaSpeed 3

How the Instructions Work

To best cover all of our customers experience levels and familiarity with the systems on their Mazda, we have broken our instructions down into numbered steps, each of which has the core information in the header with additional detail as needed depending on your experience. If you have a high level of experience, you can just use the checklist below and then skip to the step number where you need help or assistance. Video assistance may also be available for certain steps and is indicated by the HD icon:  Areas where there is a safety concern are indicated by the warning icon:  Cautionary areas (where parts are fragile, etc) are indicated by the caution icon:  Key tips are indicated with the light bulb icon: 

Overview/Checklist:

This is an overview of each of the steps of the build. You can use this as a reference and a checklist as you button up the work on the car.

1. Support Car on Floor Jack/ Jackstands or Lift


- 1a) Use a floor jack and jackstands to gain access to the underside of the vehicle.

2. Remove All Four (4) Wheels

- 2a) Remove all four (4) wheels from your vehicle

3. Install the Front CorkSport Polyurethane Mud Flaps

- 3a) Remove the one (1) push type clips from the front driver's wheel well (shown in [Figure 1A](#))
- 3b) Locate the front driver's side mud flap and secure it in place with the one (1) push pin ([Figure 1B](#))
- 3c) Using a level, make sure that the mud flap is level and in your desired location
- 3d) Mark the center of the 3 remaining holes onto the fender liner using a marker, paint pen or similar
- 3e) Fold the mud flap out of the way and drill a 0.25" hole in the fender shroud where you marked
- 3f) Put the 3 supplied push type clips in place into the holes you just drilled. Ensure that all push clips are secure and fully seated into the fender liner.

 Note: Your push type clips may look slightly different, but the process remains the same. Also, if any of the clips are not fully seated, remove them and reinstall. Adjust mud flap if needed

- 3g) Repeat steps 3a-f for the front passenger's side mud flap

4. Install the Rear CorkSport Polyurethane Mud Flaps

 Note: These install instructions were made on a vehicle 1.3" lower than stock. you may want your mud flaps higher or lower based upon personal preference.

- 4A) Attach one of the large right angle brackets to the fender bolt as shown in [Figure 2A](#) and bolt on the mud flap to just the right angle bracket using one of the M6 bolts and nuts

 Note: Now is the time to adjust the flaps to your desired height

- 4b) Mark the remaining three (3) holes
- 4c) Drill out the three (3) marks using a drill and 0.25" drill bit
- 4d) Install three (3) of the included screw type clips as shown in [Figure 2B](#)
- 4e) Make sure that the mud flap is level and spaced out to your liking and then screw in the clips and tighten down the M6 nuts and bolt using two (2) 10mm wrenches
- 4f) Repeat steps 4a-e for the rear passenger's side mud flap

Installation Instructions:

CorkSport Polyurethane Mud Flaps

2004-09 Mazda 3 & 2007-09 MazdaSpeed 3

1: Support Car on Floor Jack/ Jackstands or Lift

Use a floor jack and jackstands to gain access to the underside of the vehicle.

⚠ Always refer to the floor jack and jackstand manufacturers instructions as well as the factory owners manual for your vehicle to determine jacking points and support points. Alternately, use an automotive lift to gain access to the underside of the vehicle. Redundant support mechanisms are recommended.

2: Remove All Four (4) Wheels

A) Remove all four (4) Wheels from your vehicle using a breaker bar or impact gun and socket (also lug nut key if applicable).

3: Install the Front CorkSport Polyurethane Mud Flaps

A) In the front driver's side wheel well, locate the one (1) push type clips shown by the red circles in Figure 1A and remove it by prying the inner pin out using a small flathead screwdriver.



Figure 1A

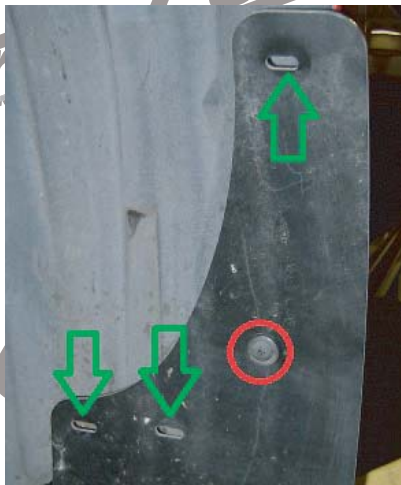


Figure 1B

B) Locate the front driver's side mud flap (skinnier flap with the glossy side facing toward the back of the car) and secure it in place by inserting the middle one (1) push pin as shown by the red circles in Figure 1B (do not lock it in place right now).

C) Using a level, rotate the mud flap clockwise or counter clockwise until the mudflap is level.

D) With the mud flap now level, place a mark on the plastic fender shroud in the middle of the 3 remaining holes in the mudflap (shown by the green arrows in Figure 1B) using a permanent marker or light colored paint pen.

E) Fold the mudflap out of the way and drill a 0.25" hole in the fender shroud where you marked in the last step.

F) Push in the supplied push type clips in to the three holes that you just drilled making sure that the clips fully seat into the fender liner. Your mud flap should now look like Figure 1C to the right.

⚠ Note: Your push type clips may look slightly different, but the process remains the same. Also, if the clips are not secure, you may need to pull them out, and reseal them to make sure they are all secure. If necessary, adjust mudflap until desired profile is achieved.

G) Repeat steps 3A-F for the front passenger's side mud flap.



Figure 1C

Installation Instructions:

CorkSport Polyurethane Mud Flaps

2004-09 Mazda 3 & 2007-09 MazdaSpeed 3

4: Install the Rear CorkSport Polyurethane Mud Flaps

Note: Your ride height may be higher or lower than the vehicle used for these installation instructions. The vehicle used for these instructions is 1.3" lower than a stock vehicle, therefore, you may want to mount your rear mud flaps slightly higher or lower than how these are mounted. The location of the rear mud flap mounting locations are for reference only. The main thing to follow here is to ensure that the mud flaps are level once installed.

A) In the rear driver's side wheel well, locate the lower 10mm bolt (underside of the **red circle** in **Figure 2A**). Remove the bolt and install the larger right angle bracket as shown to the right. Bolt the mud flap on using only the lower left bracket using the included M6 flanged hex bolt and nut to secure the flap.

Note: based upon your ride height, you may want to flip the bracket upside down or use the smaller right angle brackets. Be sure that when you bolt on the mud flap to the bracket and hold the flap up to the fender that it is at the height you want.

B) Mark the remaining three (3) hole locations using the same marking device you used for the front flaps.

C) Drill out the four (4) marked locations using a drill and 0.25" drill bit.

D) Install three (3) of the included screw type clips into the top three (3) holes as shown in **Figure 2B** (do not screw in the center screw at this time).

E) Make sure that the mud flap is level and spaced to your liking and then screw in the three clips (**red circles** in **Figure 2B**) using a phillips head screwdriver and tighten down the bolt and nuts on the last hole (**green oval** in **Figure 2B**) so that everything is secure using two (2) open ended 10mm wrenches.

F) Repeat steps 4A-E for the rear passenger's side mud flap.

Your new CorkSport Polyurethane Mudflaps are now installed. If you find that any of the mud flaps are not level, simply loosen the clips and bolts and adjust to the desired angle and retighten.



Figure 2A

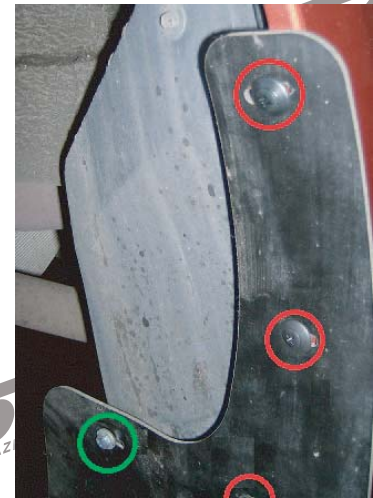


Figure 2B

