

## CorkSport Underhood LED Kit



Cast a cool white light on your engine bay with the **CorkSport Mazda LED Underhood Lighting Strip**. Connected directly to your battery, this easy to install kit uses a pin switch to activate the light when the hood is lifted, giving you and ambient white light that will enhance your Mazda or Mazdaspeed engine bay and keep the area brightly lit for under the hood installations and car shows. Please let us know your feedback by submitting a review at:

<http://www.corksport.com/corksport-underhood-led-light-kit.html>

### Pre-Installation Notes:



Make sure your vehicle is completely cooled down prior to starting installation.



These installation instructions are for use with a 2010+ MS3. The process for other vehicles is similar.



Some vehicles may require drilling the fender lip to mount the pin switch.



Read these installation instructions completely before starting installation.

### Materials and Time:



#### General Info.

Part #: Gen-8-600  
Time Est: 20-30 min  
Wrench Rating: 2/5



#### Tooling List

Wire Cutter  
Wire Stripper  
Crimper  
10mm Wrench  
Drill (Optional)  
Drill Bit (Optional)




#### Parts List

One (1) LED Light Strip  
One (1) Pin Switch  
One (1) Fuse Holder  
One (1) 5 Amp Fuse  
One (1) Male Bullet Connector  
One (1) Butt Connector  
One (1) Spade Terminal  
One (1) Rubber Strip  
Wire Cover  
Zip Ties


Need Help With Your Installation?  
Call (360) 260-CORK

## Detailed Instructions

 These instructions were written for a 2010+ Mazdaspeed3. Your specific engine bay may differ from the pictures, but the process for installation remains similar.

### 1. Install the CorkSport Under Hood LED Kit

- a) Remove the battery cover and disconnect the negative battery cable.
- b) Remove the plastic from the 3M tape on the back of the LED strip.
- c) Install the LED strip on the underside of the hood just in front of the hood scoop opening as shown in Figure 1a.

 Verify hood closes without interference.

 Warm metal before applying adhesive tape for better adhesion

- d) Feed the loose wires through the hood using the closest hole to the LED strip, circled in red in Figure 1a (for 2010 MS3). Feed it out the bottom of the hood, red circle in Figure 1b, near the battery (near hinge for 2010 MS3).

- e) Pull through the excess wire, but leave some slack to ensure the wires aren't broken. Hood should fully open without taut wire.

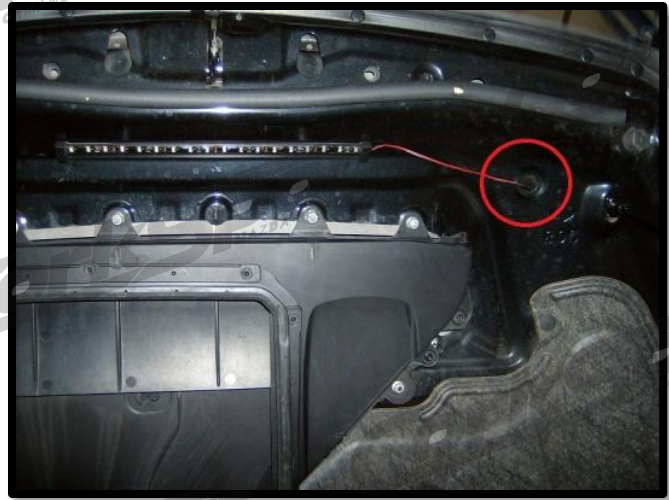


Figure 1a




Figure 1b



Figure 1c

- f) Locate the mounting hole for the pin switch (red circle in Figure 1c) and cut the black wire so that it just reaches this point. See Appendix for hood pin location for some cars.

 Some cars require drilling in this location. If so, use a 5/16 bit. Make sure there is access below the hole.

## 1. Install the CorkSport Under Hood LED Kit

- h) **Crimp the bullet connector** on the end of the black wire and connect it to the pin switch (shown fully connected in **Figure 1d**)
- i) **Install the pin switch** into the mounting hole by feeding it through from underneath, secure it in place using the nut/washer set on the pin switch. The switch is shown installed in **Figure 1e**, circled in red.
  - ⚠ You may have to trim the red plastic on the male bullet connector if the assembly is too long.
- j) **Feed the red wire into the battery box** following the negative battery cable (**red arrow in Figure 1e**), tuck the wiring to your preference. We included a few zip ties for this purpose.
- k) **Crimp the spade connector** onto the supplied fuse holder and attach the connector to the positive battery terminal as shown in **Figure 1f**.
- l) **Connect the red LED wire** to the other end of the fuse holder using the supplied reducing butt connector. The blue end goes on the fuse holder, the red on the LED lead. (See **Figure 1g**)



Figure 1d

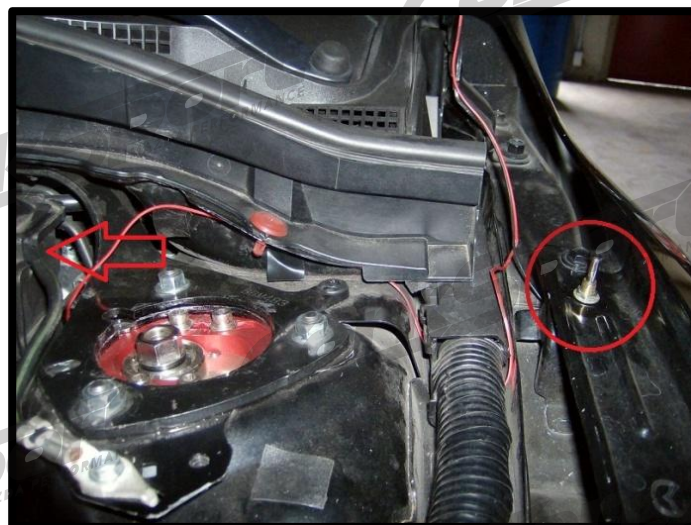


Figure 1e



Figure 1f



Figure 1g

### 1. Install the CorkSport Under Hood LED Kit

- m) Install the supplied 5A fuse into the fuse holder.
- n) Reattach the negative battery terminal to the battery. Reinstall the battery cover.
- o) Install the supplied vinyl pad onto the underside of your hood directly above the pin switch. This will ensure the pin switch engages properly and it will protect your hood from paint damage.
- p) Adjust the height of the hood pin switch so that it turns off with the hood closed.

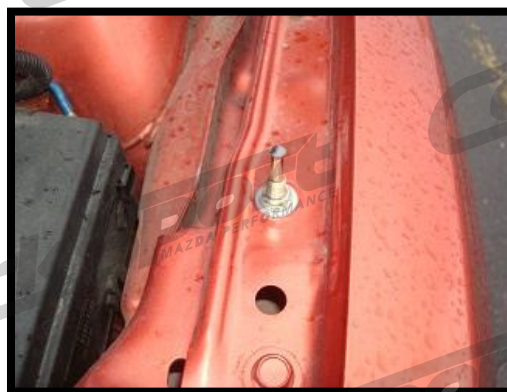


**Congratulations you have installed the CorkSport Under Hood LED kit. Make sure the pin switch functions properly and that the LED strip turns off when the hood is closed. If you are going to have your hood open for a long period of time, remove the fuse to keep from draining your battery.**

#### APPENDIX: Hood Pin Locations

We will be adding hood pin locations for most Mazda vehicles. Check our [Knowledgebase](#) for the latest version of our installation instructions.

07-09 Mazda 3 (figure 1e)



99-05 Miata (figure 1e)



Drilling is required the miata

99-03 Protégé (figure 1e)



Drilling is required the protégé

Need Help With Your Installation?

Call (360) 260-CORK

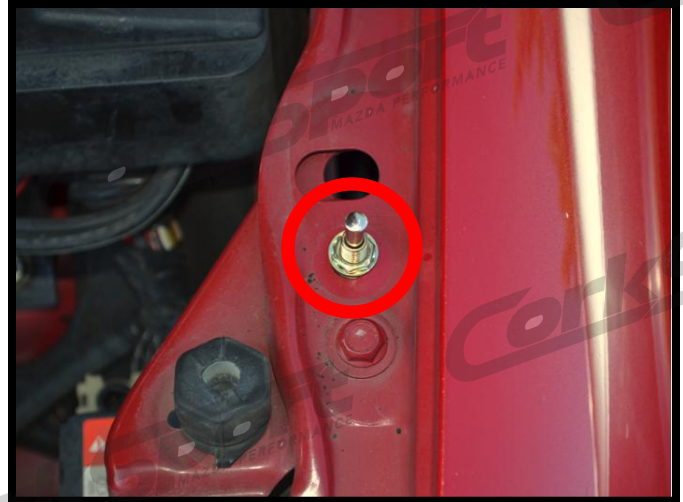
### APPENDIX: Hood Pin Locations

We will be adding hood pin locations for most Mazda vehicles. Check our [Knowledgebase](#) for the latest version of our installation instructions.

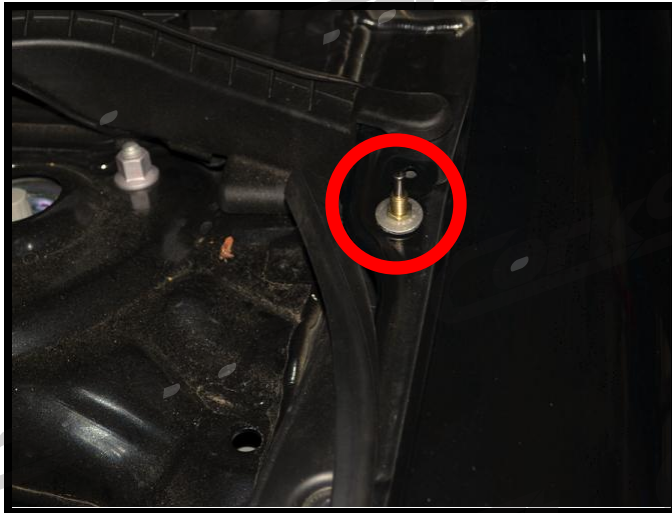
Mazda 2 (figure 1e)



Mazdaspeed 6 (figure 1e)



Cx-5 (figure 1e)



Cx-5 (figure 1e)

