

Corksport Power Series Downpipe Mazda 323 GTR



WARNING: Make sure vehicle is completely cooled down prior to starting installation. Exhaust systems and especially catalytic converters can get hot enough to seriously injure you. If you are going to work on your car within an hour or two of having driven it, use of a fan to cool off the exhaust system and the catalyst.



WARNING: Thoroughly read the precautions and instructions that come with your Floor Jack and Jackstands as well as your vehicle's owners manual for appropriate jacking methods and jacking / support points. Always double up support on a vehicle - Jack Stands and Floor Jack /etc.



NOTE: When under the car, you should be wearing mechanics gloves or other form of hand protection as well as ANSI Approved Safety Glasses.



NOTE: These instructions were written for reference only and are for the installation of the downpipe only. Custom fitment is required in order to fit exhaust to this downpipe.

Part Number: Prt-6-113 Time Estimate: 60-90 min. Wrench Rating: 2/5	Model 323 GTR	Year All	Trim Turbocharged 1.8L BP engine
TOOLING LIST: 3/8 Drive Ratchet BEST: DC Impact Gun 6" 3/8 Drive Extension 17mm Boxed End Wrench 17mm long socket BEST: Wobbly/Univ. Jack Stands Floor Jack Torque Wrench		PARTS LIST: CorkSport downpipe	





For help with installation, call 360-260-CORK (2675)



Installation Instructions:

Corksport Short Ram Intake Mazda 323 GTR Downpipe

How the Instructions Work

To best cover all of our customers experience levels and familiarity with the systems on their Mazda, we have broken our instructions down into numbered steps, each of which has the core information in the header with additional detail as needed depending on your experience. If you have a high level of experience, you can just use the checklist below and then skip to the step number where you need help or assistance. Video assistance may also be available for certain steps and is indicated by the HD icon:  Areas where there is a safety concern are indicated by the warning icon:  Cautionary areas (where parts are fragile, etc) are indicated by the caution icon:  Key tips are indicated with the light bulb icon: 

Overview/Checklist:

This is an overview of each of the steps of the build. You can use this as a reference and a checklist as you button up the work on the car.

1. Support Car on Floor Jack/Jackstands or Lift


- 1a) Use a floor jack and jackstands to gain access to the underside of the vehicle.

2. Remove the Factory Downpipe

- 2a) Spray penetrant on the four (4) nuts holding the midpipe to the downpipe and remove nuts.

 Note: Be careful not to break the bolts as they may be brittle.

- 2b) Spray penetrant on the O2 sensor ensuring that all threads are penetrated and remove sensor.

 Note: Be sure not to twist the wire harness.

- 2c) Spray penetrant on the five (5) bolts on the turbo exhaust flange and remove nuts.

 Note: Be careful not to break the bolts as they may be brittle.

- 2d) Carefully remove the downpipe.

- 2e) Remove the two (2) bolt/spring assemblies that hold the midpipe in place and remove the midpipe.

3. Installation of the Downpipe

- 3a) Install the Corksport downpipe onto the five (5) turbo housing bolts.

- 3b) Install the five (5) nuts that secure the downpipe in place and tighten to 39-46 ft/lbs.

- 3c) Install the O2 sensor and tighten.

- 3d) Your Corksport downpipe is now installed.

 Note: This downpipe will not bolt up to the factory exhaust. Custom installation of the exhaust is required.



Installation Instructions:

Corksport Power Series

Mazda 323 GTR Downpipe

C
O
R
K
S
P
O
R
T

1: Support Car on Floor Jack/Jackstands or Lift

Use a floor jack and jackstands to gain access to the underside of the vehicle.

⚠ Always refer to the floor jack and jackstand manufacturers instructions as well as the factory owners manual for your vehicle to determine jacking points and support points. Alternately, use an automotive lift to gain access to the underside of the vehicle. Redundant support mechanisms are recommended.

2: Remove Stock Downpipe

A) Spray the four (4) nuts shown in Figure 1 with penetrating fluid and let them soak for a few minutes. Remove the four (4) nuts securing the downpipe to the midpipe using the 3/8 drive ratchet and 17mm long socket or box wrench.

⚠ Note: Be careful not to break the bolts as they may be brittle from repeated heating and cooling.

B) Spray the O2 sensor (green circle in Figure 2) with penetrating fluid and let it soak in for a few minutes. Turn the O2 sensor out until it breaks free using an O2 sensor socket. Then re-apply penetrating fluid and re-tighten being sure that the penetrating fluid has reached all threads. Remove the O2 sensor.

⚠ Note: Be sure not to twist the wiring harness.

C) Spray the five (5) nuts shown in Figure 2 (red arrows, however, some nuts are hidden in the picture) with penetrating fluid and let them soak for a few minutes. Remove the five (5) nuts securing the downpipe flange to the turbo manifold using the 3/8 drive ratchet and 17mm long socket or box wrench.

⚠ Note: Be careful not to break the bolts as they may be brittle from repeated heating and cooling.

D) Carefully remove the factory downpipe.

E) Remove the two (2) bolt/spring assemblies that hold the midpipe to the rest of the exhaust and remove the midpipe.



Figure 1

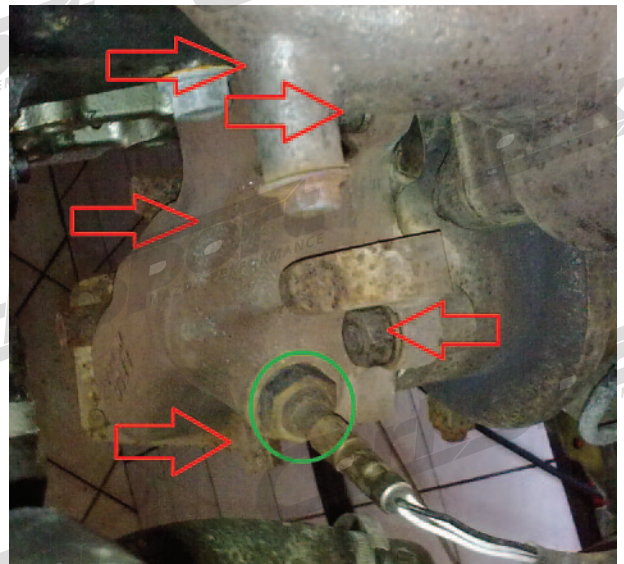


Figure 2

Installation Instructions:


Corksport Power Series

Mazda 323 GTR Downpipe

3 : Installation of the Downpipe


A) Install the Corksport downpipe being sure to line up the five (5) flange holes with the bolts on the turbo housing as shown in **Figure 3**.

B) Install the five (5) nuts that secure the downpipe in place and tighten in a criss-cross pattern to 39-46 ft/lbs using the ratchet and 17mm socket.

 Note: Place a small amount of anti seize on the threads of the O2 sensor before installing.

C) Install the O2 sensor into the bung and tighten using the O2 sensor socket and ratchet.

D) Your exhaust will now look like **Figure 4** below.

 Note: Your exhaust will not bolt up to the factory exhaust without modification.

You will now need to modify your exhaust/downpipe connection to ensure proper fitment.



Figure 3



Figure 4